

# KOBELCO

Performance  Design

## SK240<sub>SN</sub>

- Bucket capacity:  
0.70 – 0.80 m<sup>3</sup>
- Engine power:  
124 kW / 2,000 min<sup>-1</sup>
- Operating weight:  
23,500 – 24,500 kg



**We Save You Fuel**  
Achieving a Low-Carbon Society



# Performance X Design

SK240SN-11 of KOBELCO has realised a completely new value by harmonising PERFORMANCE – greater efficiency and productivity with an increased power and speed and DESIGN – operator-based operability and comfort, refusing to accept any compromises.

In pursuit of unique and matchless machines which are unforgettable once you use them, KOBELCO will continue to rise to meet every challenge.



# THE ULTIMATE IN SIMPLE AND ELEGANT DESIGN

Our pursuit of functional beauty and aesthetic sense produced a new interior design.

## Jog dial

This jog dial integrates multiple functions to realise simple operations. Even with gloved hands, the operator can set various machine conditions without stress.

## LED backlights

The switches and dials have LED backlights – they provide a bright, clear view in the dark and set a luxurious mood.







# UNFORGETTABLE COMFORT

## 1 Air suspension seat with heating

A GRAMMER\* seat is installed as standard equipment, which achieves excellent shock absorption and superior ride comfort.

\*GRAMMER is trademark of GRAMMER AG, registered in Germany and other countries.

## 2 Air-conditioner

Air is blown against the operator's waist and the back of their head, offering more comfortable operation.

## 3 Lever angles allow for comfortable operations

The operator can move the levers horizontally without twisting their wrist, which reduces the fatigue caused by the operations.



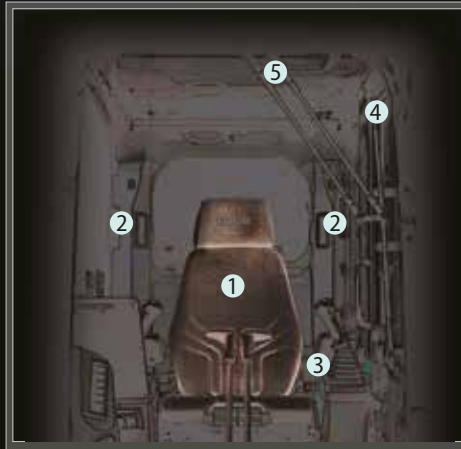
## New Hydraulic Control

Our newly upgraded hydraulic control system responds to shorter lever strokes than current models, delivering swifter, more precise movement and improved lever operability.

## 4 LED door light

The LED interior light automatically turns on when the door is opened or when the ignition is set to OFF. This ensures easy entry and exit at nighttime.

## 5 Parallel wipers secure a wide field of view



# KOBELCO

ECO

04:33



SETTING MENU



PICTURE OF CAMERA



CLOCK SETTING



SCREEN BRIGHTNESS



MAINTENANCE



CONSUMPTION



LANGUAGE SELECTION



PRESSURE RELEASE





# A WIDER VIEW BRINGS A WIDER RANGE OF USE

## 10-inch colour monitor (the largest in the industry)

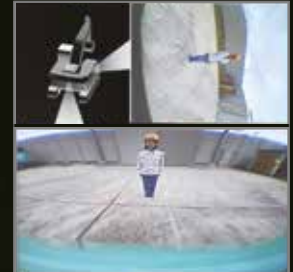
The easy-to-operate menu screen facilitates reading of important information. Images from the built-in cameras can be checked on the large screen, which helps secure safety. In addition, each icon has become easy to recognise. A password is required when starting the engine for greater security.



The right camera and rear view camera (right side view mode)

The right camera and rear view camera (straight view mode)

The right camera and rear view camera (right side view mode)



The right camera and rear view camera (straight view mode)



The bird's-eye view

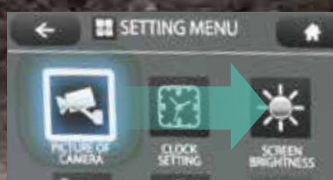


The eagle eye view

## Right camera and rear view camera

Images from the right camera and rear view camera are displayed together on the large colour monitor. The right camera view can be selected between the straight view mode and right side view mode.

In addition, the bird's-eye view mode and the eagle eye mode can also be selected.



## Screen display linked with the jog dial operation

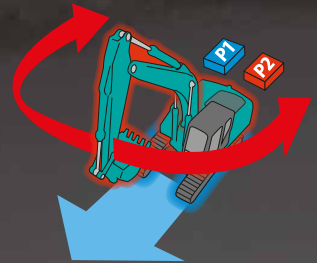
The jog dial can be operated as desired without causing stress. Turn the jog dial to the right or left to select an item and press the dial to confirm the selection.





### Independent Travel

Selecting Independent Travel dedicates one hydraulic pump to travel and one to the attachment on a continuous basis, allowing for a smooth and constant movement speed even while swinging or using the boom or attachment. With Independent Travel, safely carrying a large pipe across a job site is a breeze.



## EXPERIENCING A COMPETENT PERFORMANCE

### Excellent machine stability, plus a high-output engine

Equipped with a high output engine, the SK240SN features outstanding stability thanks to an innovative new shape for conventional excavator, as well as a larger counterweight.

Model: HINO J05EVA-KSSN

Engine output

**124 kW / 2,000 min<sup>-1</sup>**



»» Max. bucket digging force (Arm 2.94 m)

Normal: **143** kN

With Power Boost: **157** kN

Lift capacity

**11,890** kg

(Reach: 4.50 m Boom: 5.65 m Arm: 2.94 m Bucket: Without  
Counterweight: 4,900 kg Shoe: 550mm <Heavy Lift>)



# GREATER MULTI-FUNCTION CAPABILITIES

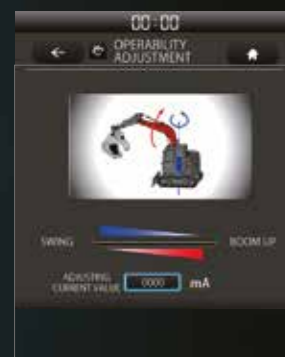
## Attachment mode

The flow-rate modes of the bucket, breaker, nibbler, and rotating grapple are set before delivery, which allows you to start operating immediately. Mode settings for other attachments, such as the tilt rotator, can easily be added or changed.



## Adjustment for hydraulic flow

Divide ratio of hydraulic flow can be adjusted by service factory for custom usage.



# EASY MAINTENANCE



## Standard OPG Level II top guard

The standard OPG Level II top guard can be tilted open for easy window cleaning. Meets standard FOPS and OPG Level II top guard requirements. (ISO 10262:1998)



## Two-stage air filter



## Urea tank

Urea filter cap is placed on the step for easy access.



## Left side (radiator and cooling system elements)

Laid out for easy access to radiator and cooling system.



## Right side

- ① Fuel filter
- ② Pre-filter
- ③ Engine oil filter

# DURABILITY YOU CAN TRUST

## Enhanced body rigidity for 25-ton class machines

The SK240SN machines are widely used in mid-scale construction projects and harsh worksites. The components have been reviewed and improvements have been made to their durability to ensure stable performance in such environments.



### Panels and supports

The right and left side panels and rear supports have been thicker to enhance body rigidity.



### Bucket cylinder rod pin

The increased diameter of the bucket cylinder rod pin contributes to enhanced durability for various types of attachments.

## Crawlers Built for Unbeatable Durability



### Standard HD Shoes and Track Link

Reinforced HD shoes of thick steel plate to master rough, stony ground.



### Three Track Guides Each Side

Large, reinforced track guide is installed.



### Reinforced Travel Motor Cover

Rear of travel motor cover is reinforced.



### Lower Under Cover

Hydraulic piping and equipment protected against damage from rubble and stony ground.

# CONVENIENT AND SENSIBLE EQUIPMENT



## Engine start password

A password is required when starting the engine for greater security. The initial password must be set at our workshop.



## Wiper adjustment function

In addition to the intermittent wiper mode and continuous wiper mode, the one-time wiper mode was added.



## Parallel wipers/Sun screen



## Console mount

The console-integrated seat allows for comfortable operation.



## DAB+ radio (FM/AM & AUX & USB & Bluetooth® & hands-free telephone)



## USB port/12V power supply

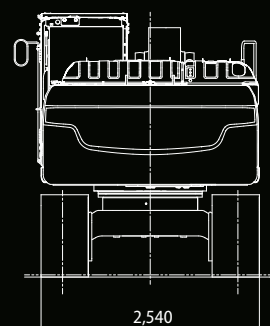
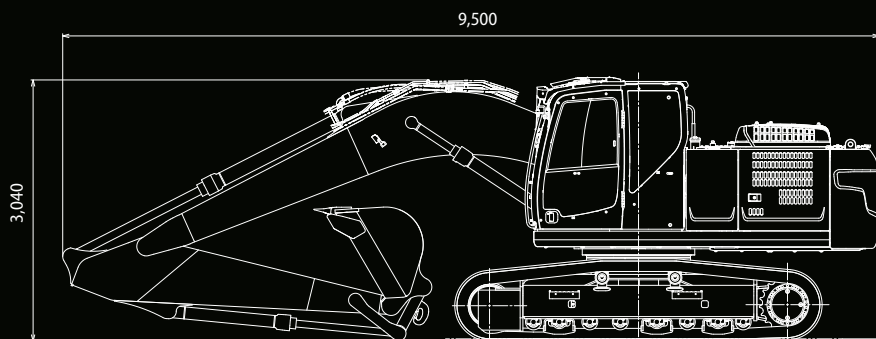


## Smartphone holder

You can use the holder with your smartphone connected to the USB port.

Note: Bluetooth® is a registered trademark of the Bluetooth SIG Inc.

# COMPLYING WITH TRANSPORT REGULATIONS



\*Values are for 2.94m arm



# KOBELCO MONITORING EXCAVATOR SYSTEM



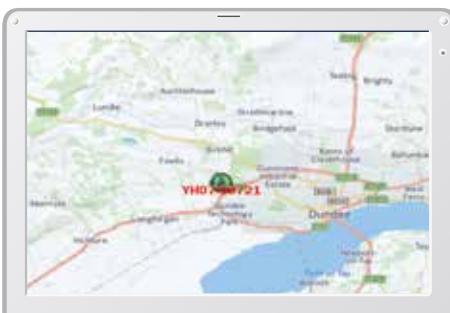
## Remote Monitoring for Peace of Mind

KOMEXS (Kobelco Monitoring Excavator System) uses satellite communication and internet to relay data, and therefore can be deployed in areas where other forms of communication are difficult. When a hydraulic excavator is fitted with this system, data on the machine's operation, such as operating hours, location, fuel consumption, and maintenance status can be obtained remotely.

## Direct Access to Operational Status

### Location Data

Accurate location data can be obtained even from sites where communications are difficult.



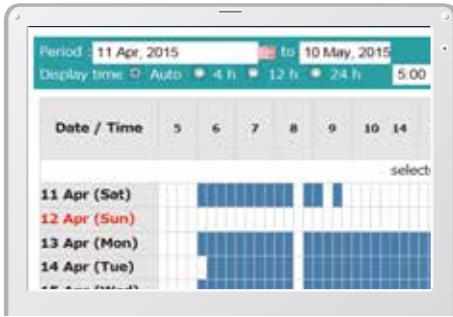
Work data

Period	11 Apr. 2015	11	10 May, 2015	Search
Type of Operation	Working Hrs		Ratio	
Total Working Hrs	169 Hrs		100 %	
Digging Hrs	72.2 Hrs		43 %	
Traveling Hrs	18.3 Hrs		11 %	
Idle Hrs	15.9 Hrs		9 %	
Opt Alt Hrs	62.5 Hrs		37 %	
Crane Mode Hrs	0 Hrs		0 %	



## Operating Hours

- A comparison of operating times of machines at multiple locations shows which locations are busier and more profitable.
- Operating hours on site can be accurately recorded, for running time calculations needed for rental machines, etc.



Daily report

## Fuel Consumption Data

Data on fuel consumption and idling times can be used to indicate improvements in fuel consumption.

Work mode	Working Hrs	Total Fuel Consumption
H mode	2:06	24.5 L
S mode	0:00	0.0 L
E mode	169:19	1489.7 L
<b>TOTAL</b>	<b>171:25</b>	<b>1514.2 L</b>

Fuel consumption

## Graph of Work Content

The graph shows how working hours are divided among different operating categories, including digging, idling, travelling and optional operations.



Work status

## Maintenance Data and Warning Alerts

### Machine Maintenance Data

- Provides maintenance status of separate machines operating at multiple sites.
- Maintenance data is also relayed to KOBELCO service personnel, for more efficient planning of periodic servicing.

Model	Serial No.	Hour Meter	Engine Oil
SK135RSLC-3/SK140SRL	YH07-09221	734 Hr	434
SK135RSLC-3/SK140SRL	YH07-09289	73 Hr	429
SK210LC-9	YQ13-10454	960 Hr	58
SK210LC-9	YQ13-10481	549 Hr	498
SK75SR-	YTO8-30374		

Maintenance

### Warning Alerts

This system warns an alert if an anomaly is sensed, preventing damage that could result in machine downtime.

## Alarm Information Can Be Received through E-mail

Alarm information or maintenance notice can be received through E-mail, using a computer or cell phone.



Alarm messages can be received on mobile device.

## Daily/Monthly Reports

Operational data downloaded onto a computer helps in formulating daily and monthly reports.

## Security System

### Engine Start Alarm

The system can be set an alarm if the machine is operated outside designated time.

Engine start alarm outside prescribed work time

### Area Alarm

It can be set an alarm if the machine is moved out of its designated area to another location.

Alarm for outside of reset area

# Specifications

## Engine

Model	HINO J05EVA-KSSN
Type	Direct Injection, water-cooled, 4 cycle diesel engine with turbocharger, intercooler
No. of cylinders	4
Bore and stroke	112 mm × 130 mm
Displacement	5.123 L
Rated power output	119 kW /2,000 min <sup>-1</sup> (ISO 9249: with fan)
	124 kW /2,000 min <sup>-1</sup> (ISO 14396: without fan)
Max. torque	640 N·m /1,600 min <sup>-1</sup> (ISO 9249: with fan)
	660 N·m /1,600 min <sup>-1</sup> (ISO 14396: without fan)

## Hydraulic system

Pump	
Type	Axial piston pumps + extra gear pump + pilot gear pump
Max. discharge flow	2 × 220 L/min, 1 × 40.6 L/min, 1 × 20 L/min
Relief valve setting	
Boom, arm and bucket	34.3 Mpa {350 kgf/cm <sup>2</sup> }
Power Boost	37.8 Mpa {385 kgf/cm <sup>2</sup> }
Travel circuit	34.3 Mpa {350 kgf/cm <sup>2</sup> }
Swing circuit	29.0 Mpa {296 kgf/cm <sup>2</sup> }
Control circuit	5.0 Mpa {50 kgf/cm <sup>2</sup> }
Pilot control pump	Gear type
Main control valve	8 - spool
Oil cooler	Air cooled type

## Swing system

Swing motor	One fixed displacement piston motor
Brake	Hydraulic; locking automatically when the swing control lever is in neutral position
Parking brake	Oil disc brake, hydraulic operated automatically
Swing speed	12.7 min <sup>-1</sup>
Swing torque	71.5 kN·m

## Attachments

Backhoe bucket and combination

Use	Backhoe bucket		
	Normal digging		
Bucket capacity	ISO heaped	m <sup>3</sup>	0.70
Opening width	With side cutter	mm	1,080
	Without side cutter	mm	980
No. of teeth			5
Bucket weight		kg	630
Combination	2.40 m short arm		○
	2.94 m standard arm		○

○ Standard ○ Recommended

## Travel system

Travel motors	2 × axial-piston, two-step motors
Travel brakes	Hydraulic brake per motor
Parking brakes	Oil disc brake per motor
Travel shoes	47 each side
Travel speed	6.0 / 3.6 km/h
Drawbar pulling force	227 kN (SAE)
Gradeability	70 % {35°}

## Cab & control

Cab	
All-weather, sound-suppressed steel cab mounted on the high suspension mounts filled with silicone oil and equipped with a heavy, insulated floor mat.	
Control	
Two hand levers and two foot pedals for travel	
Two hand levers for excavating and swing	
Electric rotary-type engine throttle	
Noise levels	
External	100 dB(A) (2000/14/EC)
Operator	68 dB(A) (ISO 6396: 2008)
Vibration levels	
Hand/arm*	≤ 2.5 m/s <sup>2</sup>
Body*	≤ 0.5 m/s <sup>2</sup>

\*For the risk assessment according to 2002/44/EC, refer to ISO/TR 25398: 2006.

## Boom, arm & bucket

Boom cylinders	120 mm × 1,355 mm
Arm cylinder	135 mm × 1,558 mm
Bucket cylinder	120 mm × 1,080 mm
Jib cylinder*	150 mm × 992 mm

\* For 2 Piece Boom

## Refilling capacities & lubrications

Fuel tank	321 L
Cooling system	19 L
Engine oil	20.5 L
Travel reduction gear	2 × 5.3 L
Swing reduction gear	1 × 2.7 L
Hydraulic oil tank	140 L tank oil level
	244 L hydraulic system
DEF/Urea tank	33.9 L

## Working ranges

Unit: m

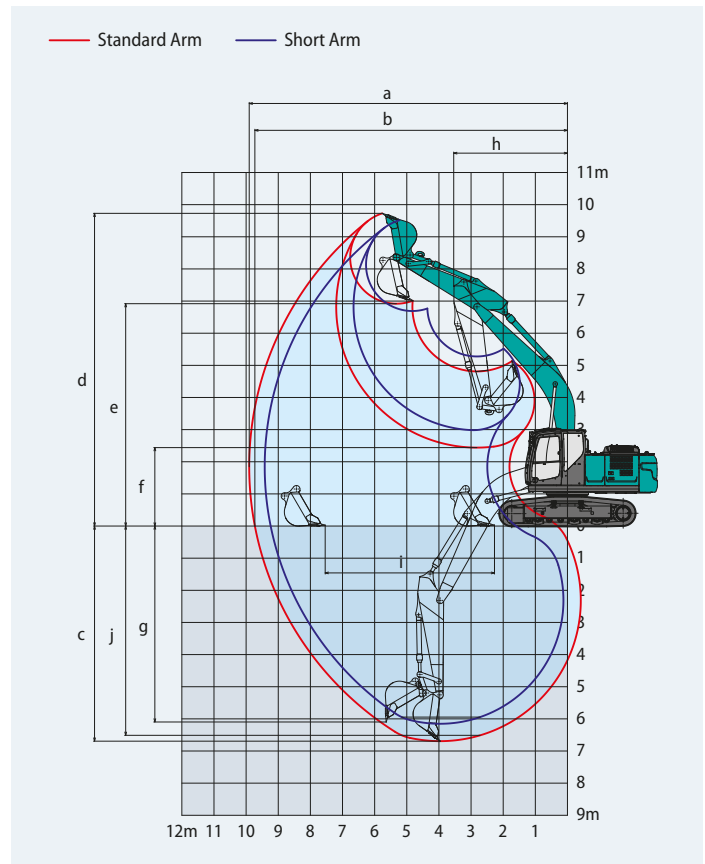
Boom		5.65 m	
Range		Short 2.40 m	Standard 2.94 m
a-	Max. digging reach	9.42	9.90
b-	Max. digging reach at ground level	9.24	9.73
c-	Max. digging depth	6.15	6.69
d-	Max. digging height	9.51	9.73
e-	Max. dumping clearance	6.69	6.92
f-	Min. dumping clearance	2.98	2.44
g-	Max. vertical wall digging depth	5.57	6.10
h-	Min. swing radius	3.57	3.55
i-	Horizontal digging stroke at ground level	4.08	5.27
j-	Digging depth for 2.4m(8') flat bottom	5.95	6.51
Bucket capacity ISO heaped m <sup>3</sup>		0.93	0.80

## Digging Force (ISO 6015)

Unit: kN

Arm length	Short 2.40 m	Standard 2.94 m
Bucket digging force	143 157*	143 157*
Arm crowding force	121 133*	102 112*

\*Power Boost engaged.



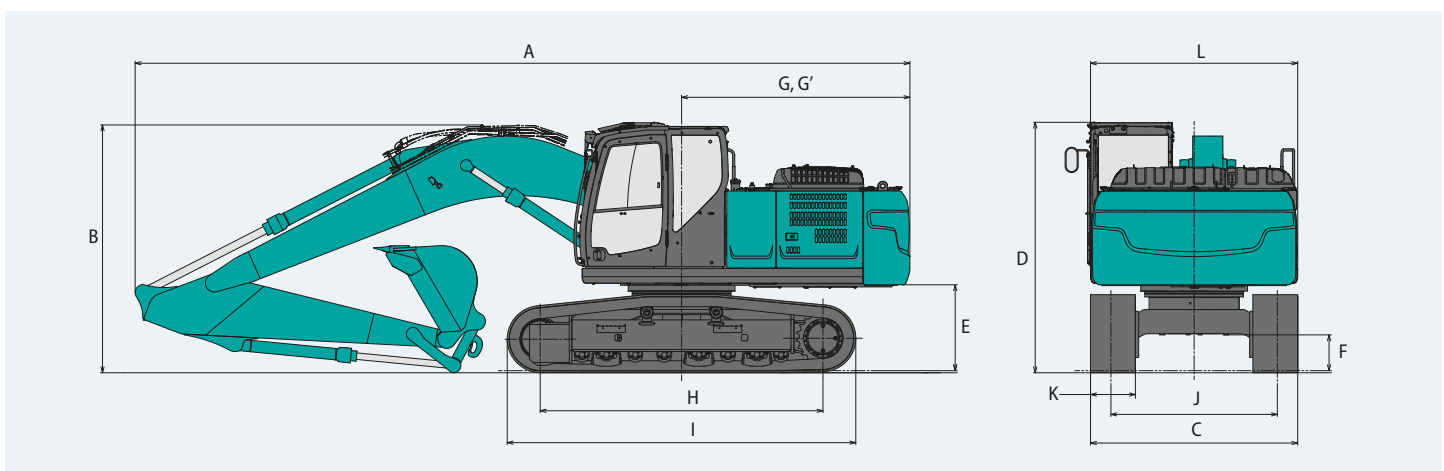
## Dimensions

Arm length	Short 2.40 m	Standard 2.94 m
A Overall length	9,580	9,500
B Overall height (to top of boom)	3,210	3,040
C Overall width of crawler	2,540	
D Overall height (to top of cab)	3,070	
E Ground clearance of rear end*	1,050	
F Ground clearance*	440	

Unit: mm

G Tail swing radius	2,800
G' Distance from centre of swing to rear end	2,800
H Tumbler distance	3,470
I Overall length of crawler	4,270
J Track gauge	2,040
K Shoe width	550
L Overall width of upperstructure	2,540

\*Without including height of shoe

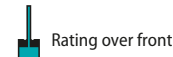
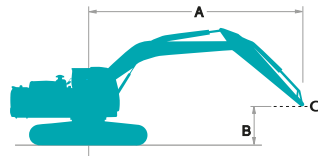


## Operating weight & ground pressure

In standard trim, with Standard Boom, 2.94 m arm, and 0.80 m<sup>3</sup> ISO heaped bucket.

Shaped	Triple grouser shoes (even height)	
Shoe width	mm	550
Overall width of crawler	mm	2,540
Ground pressure	kPa	56
Operating weight	kg	23,500

# Lift capacities



Rating over front



Rating over side or 360 degrees

A - Reach from swing centerline to arm top

B - Arm top height above/below ground

C - Lift point

Relief valve setting: 37.8 MPa {385 kgf/cm<sup>2</sup>}

SK240SN		Boom: 5.65 m Arm: 2.40 m Bucket: without Counterweight: 4,900 kg Shoe: 550 mm (Heavy Lift)										
A \ B		3.0 m		4.5 m		6.0 m		7.5 m		At Max. Reach		
												Radius
7.5 m	kg									*6,370	5,780	5.58 m
6.0 m	kg					*6,570	5,180			*5,800	4,220	6.80 m
4.5 m	kg			*8,380	7,680	*7,030	5,020	5,860	3,560	*5,650	3,540	7.52 m
3.0 m	kg			*10,230	7,100	*7,820	4,780	5,770	3,470	5,330	3,210	7.89 m
1.5 m	kg			*11,680	6,650	7,810	4,550	5,650	3,370	5,180	3,100	7.97 m
G.L.	kg			11,920	6,460	7,650	4,410	5,580	3,310	5,340	3,170	7.75 m
-1.5 m	kg	*11,480	*11,480	*11,550	6,440	7,610	4,380			5,890	3,480	7.22 m
-3.0 m	kg	*13,350	12,220	*10,030	6,560	*7,310	4,480			*6,700	4,240	6.29 m
-4.5 m	kg			*6,360	*6,360					*5,820	*5,820	4.72 m

SK240SN		Boom: 5.65 m Arm: 2.94 m Bucket: without Counterweight: 4,900 kg Shoe: 550 mm (Heavy Lift)												
A \ B		1.5 m		3.0 m		4.5 m		6.0 m		7.5 m		At Max. Reach		
														Radius
7.5 m	kg							*5,330	5,260			*4,300	*4,300	6.26 m
6.0 m	kg							*5,940	5,240			*3,980	3,730	7.36 m
4.5 m	kg							*6,490	5,060	5,890	3,580	*3,890	3,180	8.03 m
3.0 m	kg					*9,450	7,230	*7,360	4,800	5,760	3,460	*3,970	2,910	8.38 m
1.5 m	kg					*11,150	6,700	7,820	4,550	5,620	3,340	*4,200	2,810	8.45 m
G.L.	kg			*6,370	*6,370	11,890	6,420	7,610	4,370	5,520	3,240	*4,640	2,860	8.25 m
-1.5 m	kg	*6,730	*6,730	*11,090	*11,090	*11,770	6,340	7,530	4,300	5,490	3,220	5,260	3,100	7.75 m
-3.0 m	kg	*11,760	*11,760	*14,800	11,950	*10,660	6,410	7,580	4,340			6,250	3,660	6.89 m
-4.5 m	kg			*11,000	*11,000	*8,060	6,650					*6,070	5,100	5.50 m

## Notes:

- Do not attempt to lift or hold any load that is greater than these lift capacities at their specified lift point radius and heights. Weight of all accessories must be deducted from the above lift capacities.
- Lift capacities are based on machine standing on level, firm, and uniform ground. User must make allowance for job conditions such as soft or uneven ground, out of level conditions, side loads, sudden stopping of loads, hazardous conditions, experience of personnel, etc.
- Arm top defined as lift point.
- The above lift capacities are in compliance with ISO 10567. They do not exceed 87% of hydraulic lift capacity or 75% of tipping load. Lift capacities marked with an asterisk (\*) are limited by hydraulic capacity rather than tipping load.
- Operator should be fully acquainted with the Operator's and Maintenance Instructions before operating this machine. Rules for safe operation of equipment should be adhered to at all times.
- Lift capacities apply to only machine as originally manufactured and normally equipped by KOBELCO CONSTRUCTION MACHINERY CO., LTD.

# 2 Piece Boom Specifications

**SK240<sup>SN</sup>**  
SK240SN-11

## Working ranges

Unit: m

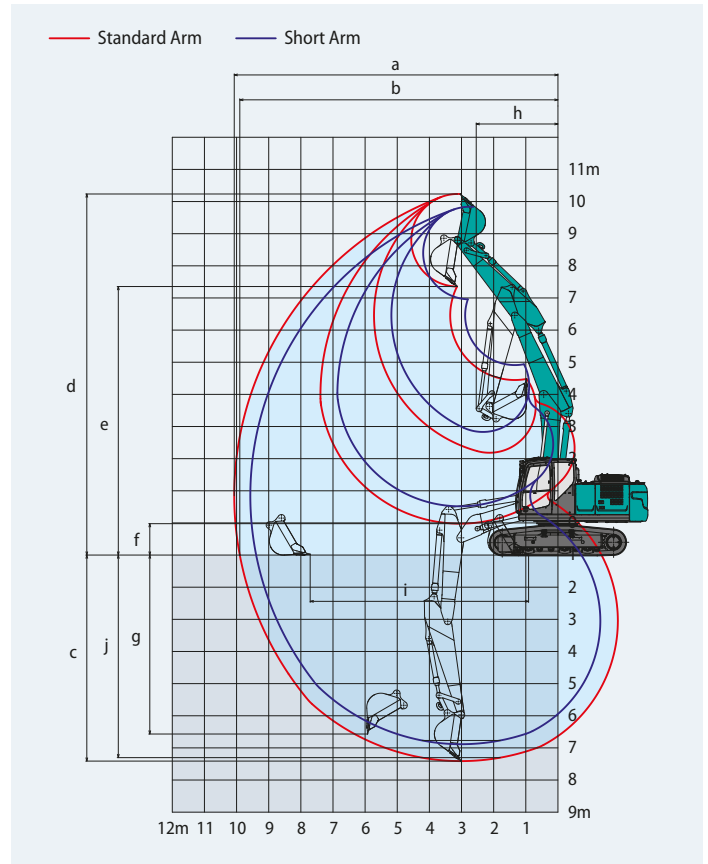
Boom	3.16 m + 2.63 m		
Range	Arm	Short 2.40 m	Standard 2.94 m
a- Max. digging reach		9.57	10.07
b- Max. digging reach at ground level		9.39	9.90
c- Max. digging depth		5.89	6.41
d- Max. digging height		10.84	11.24
e- Max. dumping clearance		7.96	8.36
f- Min. dumping clearance		1.52	0.98
g- Max. vertical wall digging depth		5.07	5.57
h- Min. swing radius		2.78	2.57
i- Horizontal digging stroke at ground level		5.77	6.80
j- Digging depth for 2.4m (8') flat bottom		5.77	6.30
Bucket capacity ISO heaped m <sup>3</sup>		0.93	0.80

## Digging Force (ISO 6015)

Unit: kN

Arm length	Short 2.40 m	Standard 2.94 m
Bucket digging force	143 157*	143 157*
Arm crowding force	121 133*	102 112*

\*Power Boost engaged



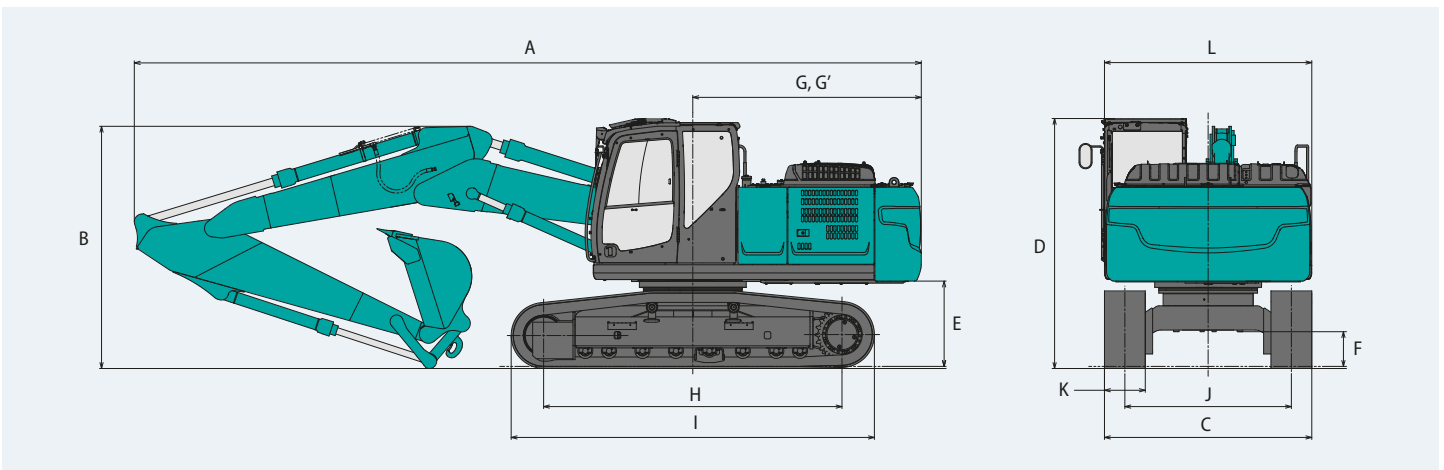
## Dimensions

Arm length	Short 2.40 m	Standard 2.94 m
A Overall length	9,660	9,640
B Overall height (to top of boom)	3,030	2,970
C Overall width of crawler	2,540	
D Overall height (to top of cab)	3,070	
E Ground clearance of rear end*	1,050	
F Ground clearance*	440	

Unit: mm

G Tail swing radius	2,800
G' Distance from centre of swing to rear end	2,800
H Tumbler distance	3,470
I Overall length of crawler	4,270
J Track gauge	2,040
K Shoe width	550
L Overall width of upperstructure	2,540

\*Without including height of shoe

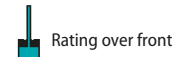
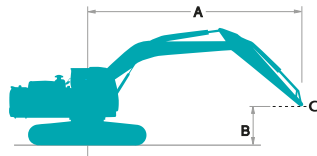


## Operating weight & ground pressure

In standard trim, with 2 Piece Boom, 2.94 m arm, and 0.80 m<sup>3</sup> ISO heaped bucket

Shaped	Triple grouser shoes (even height)	
Shoe width	mm	550
Overall width of crawler	mm	2,540
Ground pressure	kPa	58
Operating weight	kg	24,500

# Lift capacities



Rating over front



Rating over side or 360 degrees

A - Reach from swing centerline to arm top

B - Arm top height above/below ground

C - Lift point

Relief valve setting: 37.8 MPa {385 kgf/cm<sup>2</sup>}

SK240SN		2 Piece Boom		Arm: 2.40 m		Bucket: without		Counterweight: 4,900 kg		Shoe: 550 mm (Heavy Lift)				
A \ B		1.5 m		3.0 m		4.5 m		6.0 m		7.5 m		At Max. Reach		Radius
9.0 m	kg											*7,240	*7,240	3.73 m
7.5 m	kg					*7,980	*7,980					*5,450	5,260	5.80 m
6.0 m	kg					*8,150	8,020	*5,010	*5,010			*4,600	3,840	6.97 m
4.5 m	kg			*12,700	*12,700	*9,050	7,470	*4,260	*4,260	*4,690	3,340	*4,220	3,190	7.68 m
3.0 m	kg			*14,110	12,750	*10,030	6,740	*7,470	4,510	*4,920	3,240	*4,090	2,880	8.05 m
1.5 m	kg			*15,910	11,480	*10,310	6,190	7,570	4,230	*5,250	3,110	*4,150	2,770	8.12 m
G.L.	kg	*22,430	*22,430	*13,860	11,090	*9,550	5,970	*7,240	4,070	5,370	3,040	*4,400	2,840	7.91 m
-1.5 m	kg			*8,560	*8,560	*7,970	5,980	*6,190	4,040			*4,210	3,130	7.39 m
-3.0 m	kg					*5,430	*5,430	*3,980	*3,980			*3,050	*3,050	6.48 m

SK240SN		2 Piece Boom		Arm: 2.94 m		Bucket: without		Counterweight: 4,900 kg		Shoe: 550 mm (Heavy Lift)				
A \ B		1.5 m		3.0 m		4.5 m		6.0 m		7.5 m		At Max. Reach		Radius
9.0 m	kg					*5,330	*5,330					*4,460	*4,460	4.74 m
7.5 m	kg					*6,130	*6,130	*5,100	*5,100			*3,650	*3,650	6.49 m
6.0 m	kg					*6,210	*6,210	*4,130	*4,130	*3,700	3,450	*3,340	*3,340	7.55 m
4.5 m	kg			*9,450	*9,450	*8,300	7,690	*6,810	4,910	*4,310	3,410	*3,230	2,880	8.21 m
3.0 m	kg	*28,190	*28,190	*14,620	12,720	*9,640	6,940	*7,250	4,580	*4,270	3,260	*3,250	2,620	8.55 m
1.5 m	kg			*15,880	11,330	*10,260	6,300	*7,530	4,270	*4,590	3,110	*3,400	2,520	8.62 m
G.L.	kg	*18,160	*18,160	*13,120	10,970	*9,920	5,970	7,370	4,060	*5,260	3,000	*3,700	2,560	8.42 m
-1.5 m	kg			*9,060	*9,060	*8,660	5,900	*6,600	3,980	*4,800	2,980	*4,100	2,790	7.93 m
-3.0 m	kg			*7,450	*7,450	*6,500	6,010	*4,930	4,050			*3,270	*3,270	7.10 m
-4.5 m	kg			*10,510	*10,510	*5,880	*5,880					*1,470	*1,470	5.76 m

## Notes:

- Do not attempt to lift or hold any load that is greater than these lift capacities at their specified lift point radius and heights. Weight of all accessories must be deducted from the above lift capacities.
- Lift capacities are based on machine standing on level, firm, and uniform ground. User must make allowance for job conditions such as soft or uneven ground, out of level conditions, side loads, sudden stopping of loads, hazardous conditions, experience of personnel, etc.
- Arm top defined as lift point.
- The above lift capacities are in compliance with ISO 10567. They do not exceed 87% of hydraulic lift capacity or 75% of tipping load. Lift capacities marked with an asterisk (\*) are limited by hydraulic capacity rather than tipping load.
- Operator should be fully acquainted with the Operator's and Maintenance Instructions before operating this machine. Rules for safe operation of equipment should be adhered to at all times.
- Lift capacities apply to only machine as originally manufactured and normally equipped by KOBELCO CONSTRUCTION MACHINERY CO., LTD.

MEMO

**SK240**SN  
SK240SN-11

---

---

---

---

---

---

---

---

---

---

---

---

---

---

---

---

---

---

---

---

---

---

---

---

---

---

---

---

---

---

# Standard and Optional Equipment

**SK240<sub>SN</sub>**  
SK240SN-11

● = Std ○ = Opt — = N/A

Category	Description	SK240SN-11	
		Mono Boom / 2 Piece Boom	
Engine	Hino J05EVA-KSSN	●	
	Exhaust DOC DPF SCR system	●	
	Alternator 24 V/60 A	●	
	Starter motor 24 V/5 kW	●	
	Batteries 2 x 12 V (112 Ah)	●	
	Fan suction type cooling system	●	
	Auto deceleration function	●	
Hydraulic system	Auto idle stop (AIS)	●	
	3 work modes H, S, Eco	●	
	Power boost (37.8 MPa (385 kgf/cm <sup>2</sup> ))	●	
	Heavy lift mode	●	
	Pressure release function	●	
	Independent travel function	●	
	Auto warm up system	●	
	Proportional Hand Control (for E&N&B piping)	●	
	Hydraulic oil VG32	●	
	Hydraulic oil VG46	○	
	Hydraulic oil VG68	○	
Piping	E & N&B piping	●	
	QH piping	●	
Cabin	Air suspension seat with heating	●	
	10 inch colour monitor	●	
	LED door light	●	
	Air-conditioner	●	
	DAB+ radio (FM/AM & AUX & USB & Bluetooth* & hands free telephone)	●	
	Harness for CAB four lights and CAB yellow flasher	●	
	Parallel wiper	●	
	12 V power supply	●	
	Rain visor	○	
	Sun screen	○	
Lights	LED work lights ; 2 on Boom & 1 on upper frame	●	
	LED work lights ; 2 on Cab top front	○	
Working equipment	Standard Boom (5.65 m)	●	
	2 Piece Boom	○	
	Standard HD arm (2.94 m) with rock guard	○	
	Short HD arm (2.40 m) with rock ruard	●	
	OHK hook	●	
Counterweight	Standard C/W (TTL 4,900 kg)	●	
Undercarriage	550 mm steel shoe	●	
	Track guide (one per side)	●	
	Additional track guides (two additional per side)	●	
	Reinforced travel motor cover	●	
	HD track link	●	
	Lower frame guard	●	
Safety	Engine emergency stop switch	●	
	Pump emergency mode (KPSS release switch)	●	
	Emergency accel dial	●	
	Emergency manual valve for lowering attachment	●	
	Overload alarm	●	
	Safety valve for Boom & arm cylinder	●	
	ROPS compliant cab (ISO 12117-2:2008)	●	
	OPG Level II top guard (ISO 10262;1998)	●	
	OPG Level II front guard (ISO 10262;1998)	○	
	Eagle-eye view camera (Rear, Right, Left)	●	
	Seatbelt indicator on display	●	
Others	Extended guard rail	○	
	Refueling pump	●	
	Harness for engine room light	●	
	Ral color	○	
	KOMEXS	●	

\*The air conditioning system on this machine contains fluorinated greenhouse gas HFC-134a (GWP 1430). Quantity of gas 0.9 kg (CO<sup>2</sup> equivalent 1.3 t).

Note: Bluetooth\* is a registered trademark of the Bluetooth SIG Inc.

Note: This catalogue may contain attachments and optional equipment that are not available in your area. And it may contain photographs of machines with specifications that differ from those of machines sold in your areas. Please consult your nearest KOBELCO distributor for those items you require.

Specialist equipment is needed to use this machine in demolition work. Before using it please contact your KOBELCO dealer.

Due to our policy of continuous product improvements all designs and specifications are subject to change without advance notice.

Copyright by **KOBELCO CONSTRUCTION MACHINERY CO., LTD.** No part of this catalogue may be reproduced in any manner without notice.

## KOBELCO CONSTRUCTION MACHINERY EUROPE B.V.

Veluwezoom 15  
1327 AE Almere  
The Netherlands  
www.kobelco-europe.com

Enquiries To: